



Powering Business Worldwide

BACKED BY
Roadranger
SUPPORT

Subject: Fuller Advantage Lube Tube Misconnection

Document Number: TAIB0851

Date: July 1, 2014

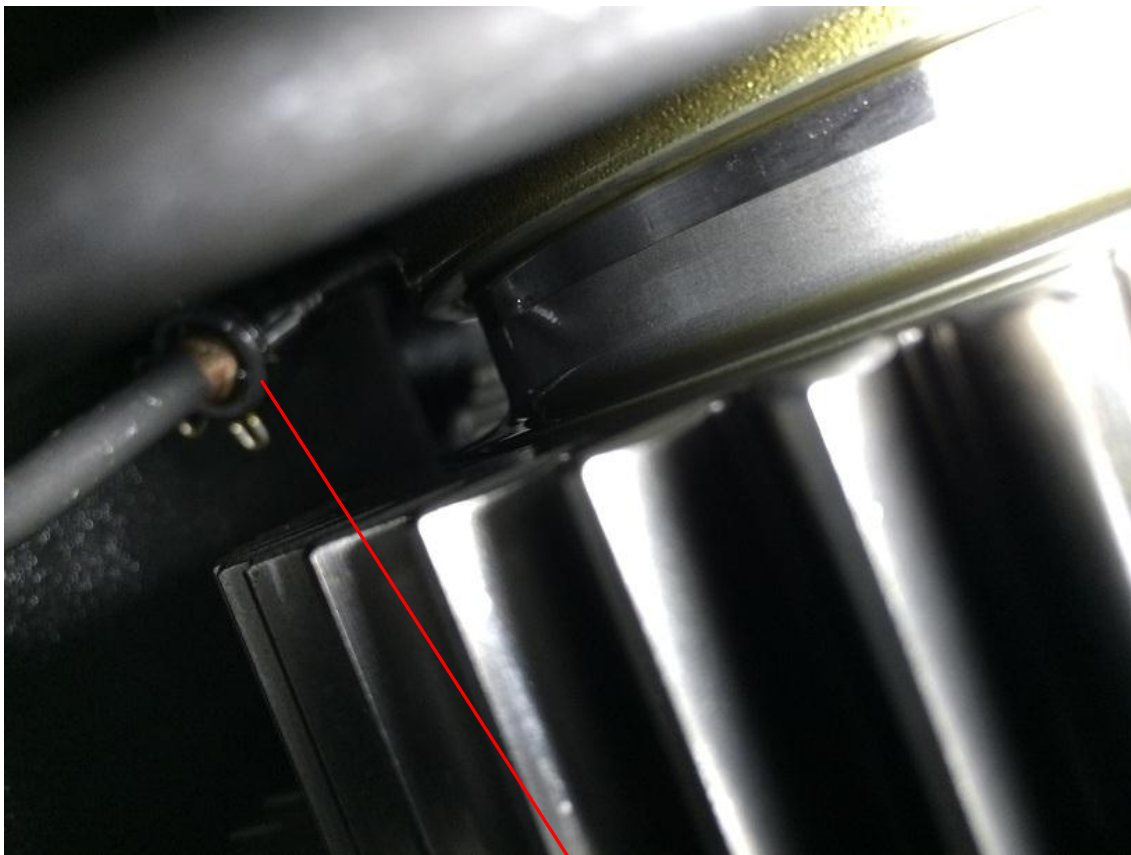
Updated: July 7, 2014

Issue Description:

The Fuller Advantage transmissions with select serial numbers, listed below, between K1036793 and K1059425 have been found with the upper reverse idler feed tube slip collar not seated over the ferrule of the lower idler feed tube. This cannot be seen external of the transmission.

See the list below to determine if the transmission serial number is suspect.

- This picture is a view through the 8 bolt PTO cover looking up at the connection point.



The connection point of the lower idler feed tube to the upper idler feed tube.



Slip Collar

Ferrule

This is an improper connection with the slip collar not fully seated over the ferrule.



- This is a proper connection with the slip collar fully seated over the ferrule and the spring clip locked in place.
- The lower idler feed tube boss of the ferrule will be flush with the slip collar.

Containment:

- The affected transmission serial numbers have been identified.
- Proactive inspection for affected transmissions
- Repair any transmissions found with this issue through correct warranty channels

Affected Models/Population:

Fuller Advantage Mechanical and Automated transmissions

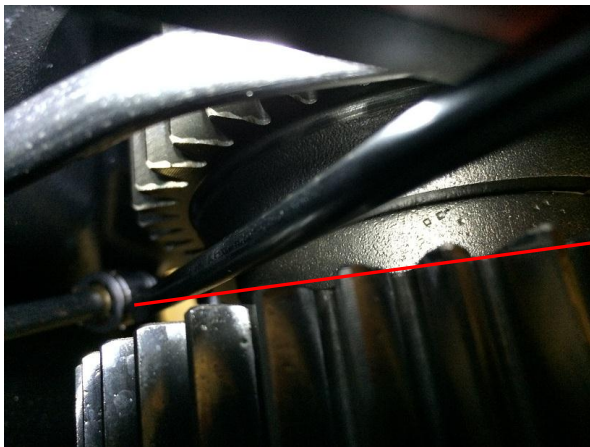
Field Strategy:

- Proactive inspection
- If the connection is identified with the slip collar on the upper idler feed tube not seated fully over the ferrule of the lower idler feed tube then proceed with the corrective action.

Corrective Action:

[View video for lube tube reconnection here](#) or follow the procedure below

1. Confirm the transmission is within the identified serial number range
2. Drain the transmission oil in to a clean bucket to reuse.
3. Remove the 8 bolt PTO cover or PTO from the bottom of the transmission. (This is a RTV sealant joint so a rubber mallet may need to be used for the cover removal)
4. Verify if the connection of the slip collar for the upper reverse idler feed tube and the lower idler feed tube ferrule are seated fully.
 - a. Refer to the pictures above to determine if the connection is seated properly or not.
 - b. **(Note: If you cannot determine if the collar is seated)** A long flat blade screw driver can be used to push back on the slip collar to also verify the proper connection.



- Screw driver blade pushing on the slip collar to verify it is locked in place through the 8 bolt PTO cover.
- When the screw driver is used make sure the spring retainer clip does not pop off.

5. If the slip collar is fully seated over the ferrule.
 - a. Proceed to step 10.
 - b. If the connection is not seated then proceed to the next step.
 - c. If the upper lube tube is missing or damaged please contact the Roadranger call center @ 1-800-826-4357 for repair instructions.

Service Bulletin – Product

6. Using the lube tube reconnection tool. Slide the tool head up around the lower countershaft gear following the lower idler feed tube through the 8 bolt PTO cover.
7. If you are not provided a tool for the repair procedure please contact the Roadranger Call Center @ 1-800-826-4357.



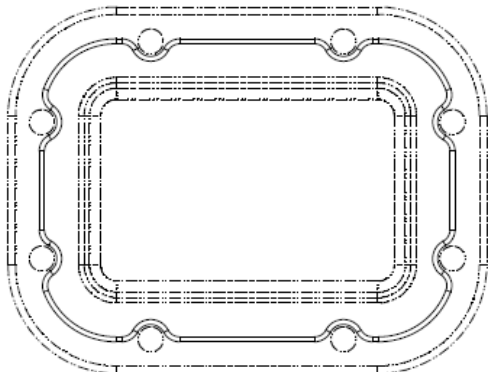
8. Clip the forks of the tool head onto each side of the lube tube pipe.



9. Clamp the pliers to contact the slip collar and the ferrule side. (Note: you may need to wiggle the tool head around for the slip collar to fully seat over the ferrule.) Once the slip collar snaps over the ferrule verify the spring clip is still in place and fully seated.



10. With the slip collar seated over the ferrule and the spring clip in place. Confirm that the connection is secure (**refer back to step 4**).
11. Prepare the PTO Cover for installation
12. Remove the excess RTV sealant from the PTO cover and main case. Ensure that both sealing surfaces are clean and dry. Apply a 1/8 inch bead of (Loctite 518 or Permatex 51813) anaerobic sealant to the PTO cover following the pattern below.



13. Install the PTO or PTO cover and torque the 8 cap screws to 50-65 lb-ft.
14. Refill with the drained transmission oil into the transmission and top off if needed.
15. Verify there are no leaks on the transmission

Service Bulletin – Product

K1036793	K1042445	K1047636	K1050487	K1050978	K1051727
K1036794	K1042446	K1047637	K1050488	K1050979	K1051728
K1036795	K1042447	K1047638	K1050489	K1050980	K1051730
K1036796	K1042499	K1047639	K1050490	K1050981	K1051731
K1036797	K1042500	K1047640	K1050491	K1050982	K1051732
K1036798	K1042501	K1047231	K1050492	K1050983	K1051733
K1041155	K1042539	K1047428	K1050493	K1050984	K1051746
K1041156	K1042540	K1047431	K1050494	K1050985	K1051747
K1041157	K1042541	K1047441	K1050495	K1051000	K1051765
K1041158	K1042542	K1047449	K1050496	K1051001	K1051796
K1041159	K1042543	K1047641	K1050497	K1051002	K1051825
K1041160	K1042544	K1047643	K1050499	K1051003	K1051826
K1041161	K1042545	K1047642	K1050500	K1051004	K1051827
K1041162	K1042546	K1048071	K1050501	K1051009	K1051828
K1041163	K1042547	K1048072	K1050502	K1051024	K1051829
K1041164	K1042548	K1048073	K1050503	K1051025	K1051830
K1041165	K1042549	K1049526	K1050509	K1051022	K1051831
K1041166	K1042550	K1049527	K1050510	K1051023	K1051852
K1041167	K1042551	K1049528	K1050511	K1051096	K1054540
K1041168	K1042552	K1049529	K1050512	K1051218	K1054541
K1041169	K1042553	K1049530	K1050513	K1051219	K1055116
K1041170	K1042554	K1049538	K1050514	K1051432	K1055117
K1041171	K1042574	K1049539	K1050515	K1051433	K1055118
K1041172	K1042575	K1049540	K1050516	K1051434	K1055119
K1041173	K1042576	K1049541	K1050517	K1051435	K1055120
K1041174	K1042577	K1049542	K1050518	K1051436	K1055121
K1041175	K1042876	K1049543	K1050519	K1051437	K1055122
K1041176	K1042877	K1049544	K1050520	K1051438	K1055169
K1041177	K1042878	K1049547	K1050667	K1051439	K1055758
K1041178	K1042879	K1049548	K1050668	K1051440	K1055801
K1041179	K1042880	K1049549	K1050669	K1051441	K1056227
K1041180	K1042881	K1049550	K1050670	K1051442	K1057954
K1041181	K1043143	K1049551	K1050671	K1051443	K1057985
K1041182	K1043466	K1049552	K1050672	K1051444	
K1041183	K1043467	K1049553	K1050673	K1051445	
K1041184	K1043468	K1049558	K1050674	K1051446	
K1041185	K1043469	K1049559	K1050675	K1051447	
K1042087	K1043470	K1050061	K1050722	K1051448	
K1042088	K1044771	K1050168	K1050723	K1051449	
K1042089	K1046841	K1050169	K1050724	K1051453	
K1042090	K1047217	K1050170	K1050725	K1051454	
K1042297	K1047225	K1050173	K1050726	K1051721	
K1042440	K1047226	K1050174	K1050727	K1051722	
K1042441	K1047227	K1050175	K1050974	K1051723	
K1042442	K1047228	K1050472	K1050975	K1051724	
K1042443	K1047229	K1050485	K1050976	K1051725	
K1042444	K1047230	K1050486	K1050977	K1051726	

Warranty Information:

Warranty Parts:

- Anaerobic sealant
- Lube top off

Warranty Labor:

- OEM SRT for PTO or PTO cover removal and proactive inspection of the slip collar
- .8 hr. reconnection of the lube tubes with the reconnection tool provided

Warranty Coverage:

Standard warranty coverage apply

The material contained in this bulletin is product improvement information. Eaton Corporation is not committed to, or liable for, canvassing existing products. FSUD: 2014-FSUD-2148