



Bulletin: TAIB-0840

Date: February 27, 2012

Bulletin Type: Service

Topic: HLA Version 28 Production Software Released and APF Revision

Issue Description:

Version 28 software for HLA has been released. The HLA advanced product function (APF) has also been revised with calibration updates to support changes in v28 software.

Containment/Corrective Action:

Upload v28 software to the HLA system ECU and load default calibrations with HLA APF.

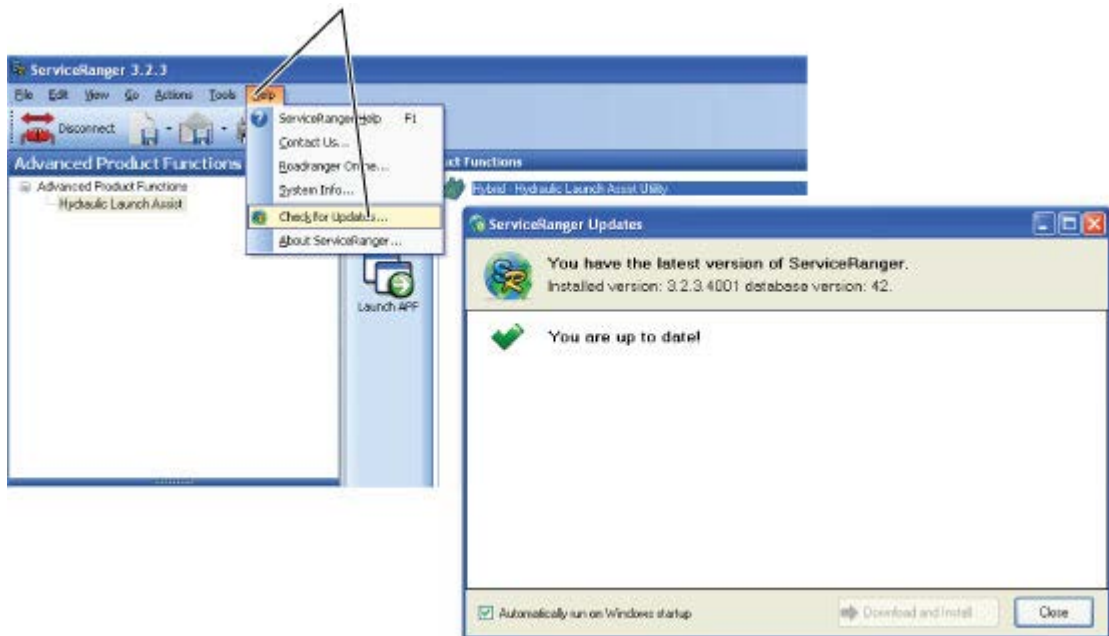
Affected Models/Population:

All HLA systems in service

Field Strategy:

Update the HLA ECU with the latest software and calibrations:

1. Download ServiceRanger database 42. In ServiceRanger, select Check for Updates... from the Help dropdown menu.



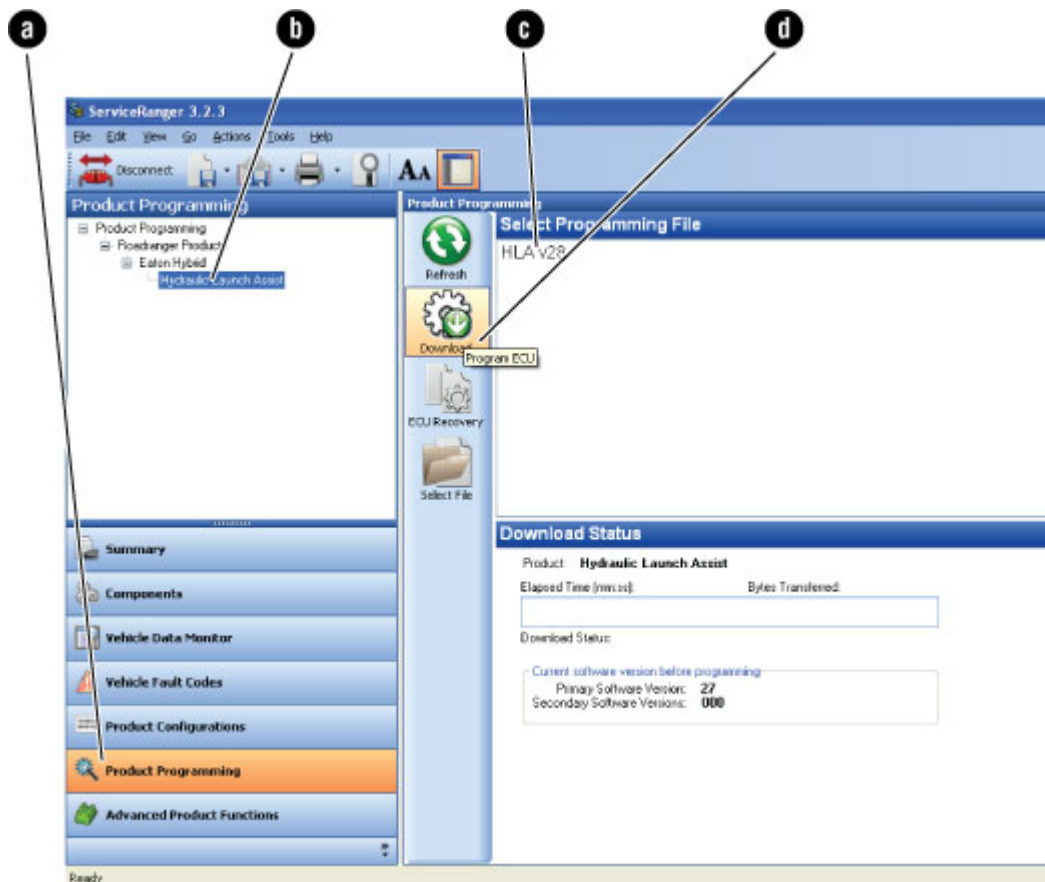
Note: Database 42 is also available on the ServiceRanger [Downloads & Updates page](#) on Roadranger.com

2. Download the HLA APF and run the Install Wizard. Save the file to your Desktop and the double click to run the install.

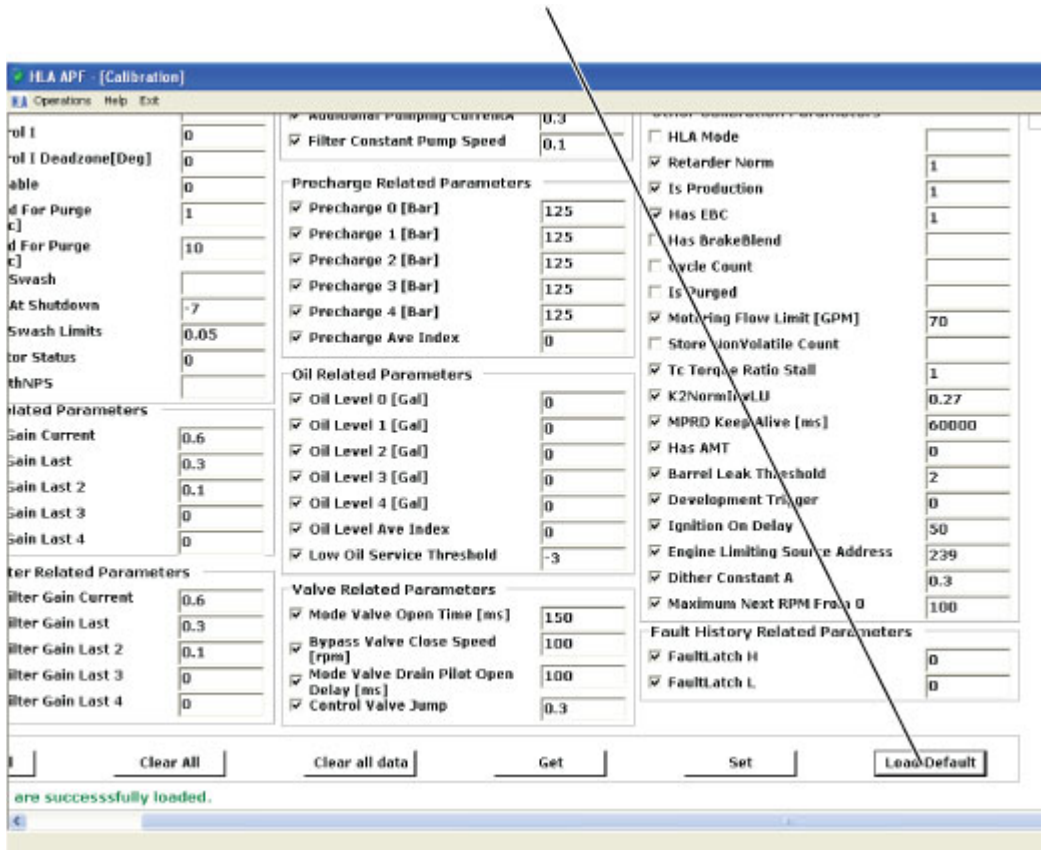
Note: For the HLA APF download, contact the Roadranger Call Center Hybrid agent or your local Roadranger field representative.



3. Use ServiceRanger to program HLA with version 28 software:
 - a. Click Product Programming button
 - b. Select Hydraulic Launch Assist from list in Product Programming pane
 - c. Select HLA v28 from Select Programming File pane
 - d. Click Download icon



- Open the HLA APF and click the Load Default button in the Calibration window.



This HLA software is released in ServiceRanger 3.2.3 in database 42 at user level 5 and above. The ServiceRanger database 42 update can be downloaded from the Roadranger.com web site. <http://www.roadranger.com/Roadranger/index.htm>

For the HLA APF download, contact the Roadranger Call Center Hybrid agent (1-800-826-4357) or your local Roadranger field representative.

Warranty Information:

None

The material contained in this bulletin is product improvement information. Eaton and Dana Corporation are not committed to, or liable for, canvassing existing products. FSUD: 2012-FSUD-1759