



Powering Business Worldwide

BACKED BY
Roadranger
SUPPORT

Subject: ServiceRanger 4 Approved Vehicle Data Link Adapters

Document Number: MDIB004

Date: November 25, 2013

Updated: February 13, 2017

Issue Description:

ServiceRanger 4 complies with the SAE Surface Vehicle Recommended Practices for J1587 and J1939 vehicle communications, as well as the communication standards as defined by the Truck Maintenance Council (TMC) recommended practice RP1210C for vehicle link adapter communications.

The following list of vehicle data link adapters have been tested with ServiceRanger 4 and are approved for ECU programming. If an adapter is not in the list there is either a compatibility issue or Eaton has not completed testing for that particular adapter.

Nexiq

<https://www.nexiq.com/>

- USB-Link (P/N 125032) Driver v. 9.6.0.2 or greater
- USB-Link 2 with Bluetooth (P/N 124032) Driver v. 2.3.0.0 or greater
- USB-Link 2 with Wi-Fi (P/N 124034) Driver v. 2.3.0.0 or greater

Note: Latest Driver Download Link: <https://www.nexiq.com/Home/Drivers>

Noregon

<https://www.noregon.com/>

- JPRO DLA+ (P/N 12206)
- JPRO DLA+ PLC (P/N 12204)
- JPRO DLA+ Wireless (P/N 12208)
- JPRO DLA+ 2.0 (P/N 122061)
- JPRO DLA+ 2.0 Wireless (P/N 122081)
- Driver version all: 4.0.5983.2 or greater

Note: Latest Driver Download Link: <http://jprofleetproducts.com/>

DG Technologies

<https://www.dgtech.com/>

- Dearborn Protocol Adapter 5 (P/N DG-DPA5-BT) Driver v. 2.03 or greater
- Dearborn Protocol Adapter 4 Plus (P/N DG-DPA4PLUS) Driver v. 2.02 or greater

Note: Latest Driver Download Link: <https://www.dgtech.com/downloads/>

Cummins

<https://cumminsengines.com/inline>

- Inline 6 (P/N 2892093) Driver v. 6.4.1.0 or greater
- Inline 7 (P/N 5299899) Driver v. 2.3.0.0 or greater

Note: Latest Driver Download Link: <https://cumminsengines.com/inline-downloads/>

Containment/Corrective Action:

Verify your ServiceRanger 4 software version is up-to-date then follow the field strategy below to set each data link connection setting. Proper setting of each data link connection will ensure reliable and stable vehicle communication.

Affected Models/Population:

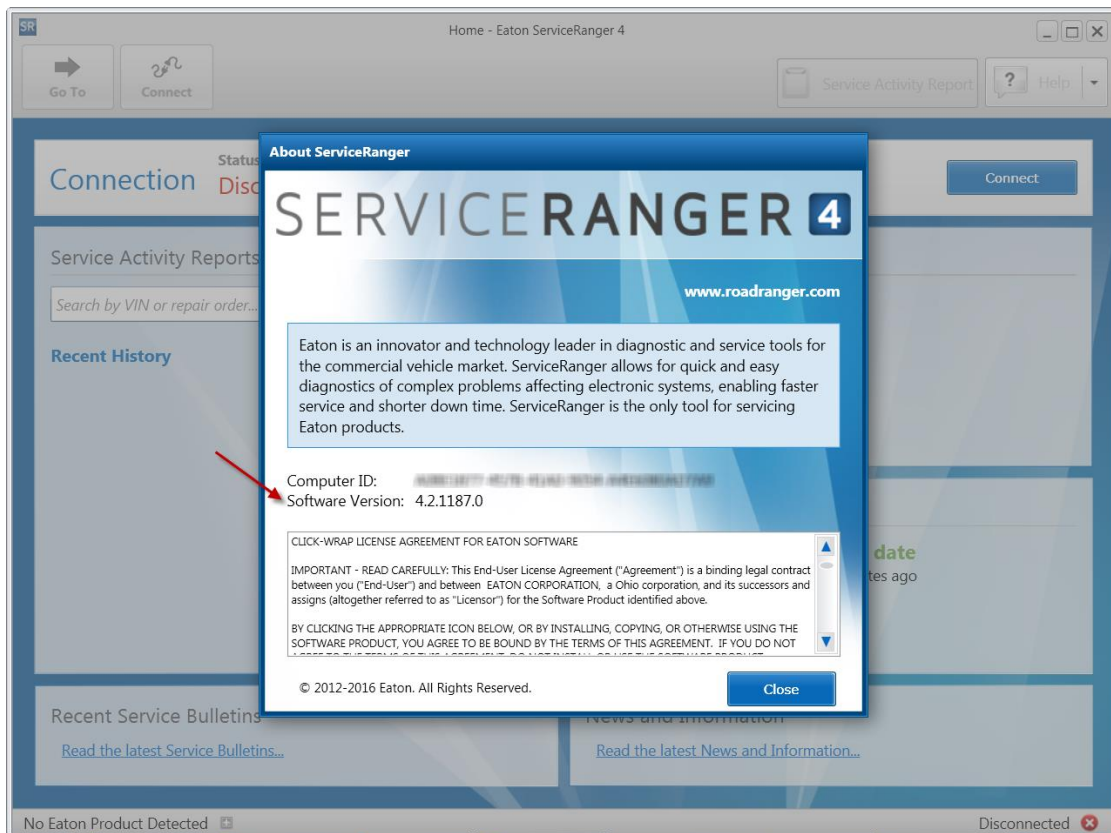
ServiceRanger 4.x

IMPORTANT: Connection to vehicles with the new high speed CAN bus require ServiceRanger **version 4.2.1187** or greater. Connection may also require a J1939 CAN channel 3 to CAN channel 1 crossover cable. Contact your vehicle OEM or vehicle link adapter manufacturer for more information.

Field Strategy:

1. Click on ServiceRanger 4 Desktop icon to launch the software program.
2. Click on **Help** in the upper right corner and **About ServiceRanger** to confirm the ServiceRanger version is up-to-date then **Close** the window.

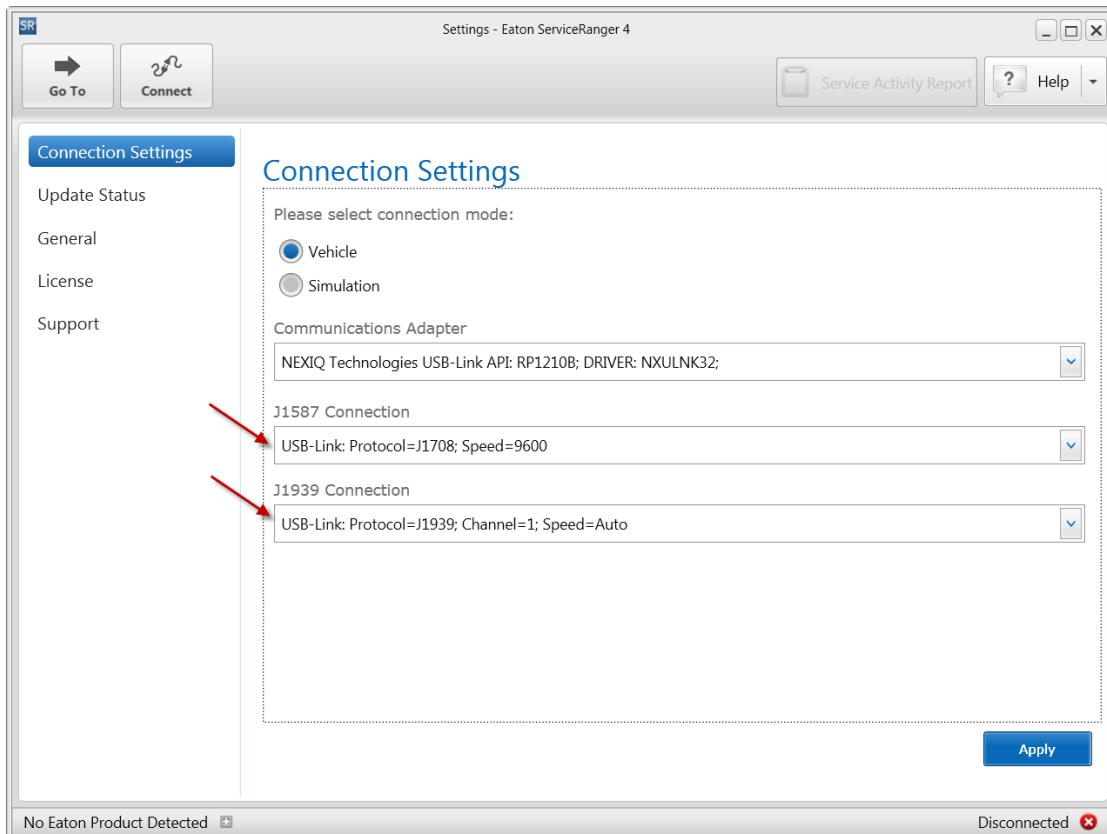
Note: If ServiceRanger is **not** up-to-date close the program and go to the ServiceRanger webpage on www.Roadranger.com to download the latest version.



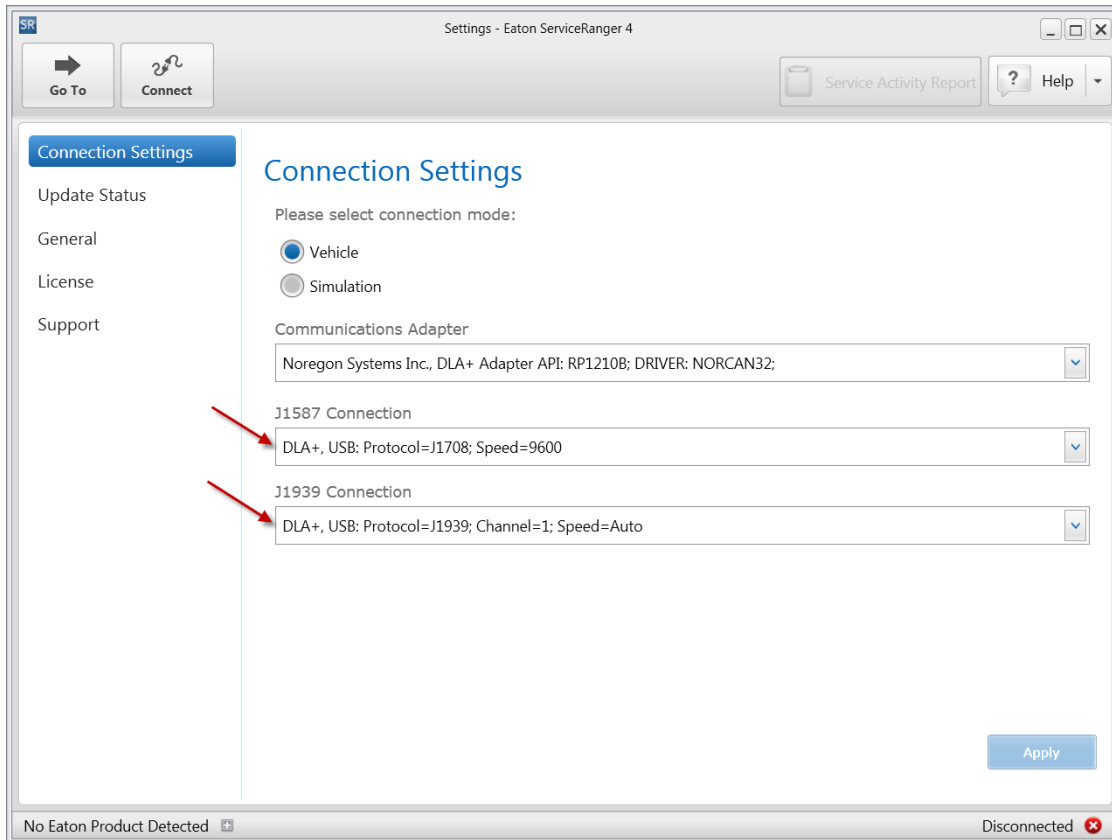
3. Click on the **Go To** button in the upper left then select the **Settings** function.
4. In the **Settings** function verify your vehicle link adapter is selected. If it is not, use the field dropdown arrow to select your adapter.
5. Next select the proper and J1587 and J1939 Connection settings for your adapter. Some examples are shown below.

Adapter Setting Examples (others not shown are similar):

Nexiq USB-Link adapter connection settings:



Noregon JPRO DLA+ adapter connection settings:



IMPORTANT: Never use an adapter wirelessly when ECU programming.

Warranty Information:

Damage to an Eaton ECU from using a vehicle link adapter that has not been approved can result in a void of the product warranty.