

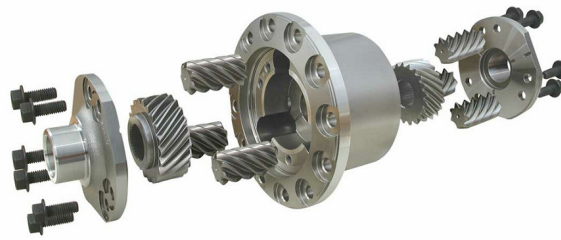


# Dana<sup>®</sup> Spicer<sup>®</sup> Drive Axles

P/N: SHAIS144

## Truetrac Differential Information

The Tractech “Truetrac” Limited Slip differential is a parallel axis planetary helical type limited-slip differential. When the vehicle experiences unequal side-to-side traction, the pinions resist rotation in the case and transfer torque from one side gear to the other. Under certain operating conditions customers may experience light noise and/or a mild shudder, which is normal.



Spicer Truetrac Limited Slip Service Kit Reference Chart				
DANA PRODUCTION P/N	SPICER SERVICE KIT P/N	DANA MODEL INFORMATION	SPLINE COUNT	NOTES
360DN111-X	512772	S135, S150 - (Ratio 3.91 - 4.44)	36	
360DN107-X	512773	S135, S150 - (Ratio 4.78 - 5.38)	36	
130138	512774	17060S, 19060S (Ratio 2.64 - 3.25)	39	
130139	512775	17060S, 19060S (Ratio 3.36 - 3.90)	39	
130140	512776	17060S, 19060S (Ratio 4.11 - 4.88)	39	
130141	512777	17060S, 19060S (Ratio 5.29 - 7.17)	39	
130142	512778	21060S, 22060S (Ratio 2.64 - 3.25)	41	
130143	512779	21060S, 22060S (Ratio 3.36 - 3.90)	41	
130144	512780	21060S, 22060S (Ratio 4.11 - 4.88)	41	
130145	512781	21060S, 22060S (Ratio 5.29 - 7.17)	41	
134242	513305	S130L	36	replaced 130999
133886	504004	S111L - Chrysler	34	
134240	504038	S110L w/ABS (Ratio 4.30 - 4.88)	34	replaced 134001, 130743

# Roadranger

MORE TIME ON THE ROAD.

For spec'ing or service assistance, call 1-800-826-HELP (4357) 24 hours a day, 7 days a week, (Mexico: 8-332-1515). Or visit our web site at: <http://www.roadranger.com>