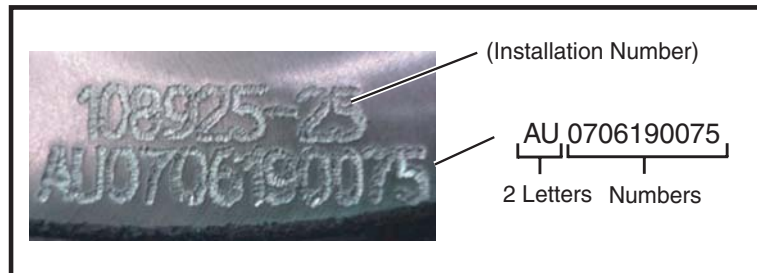


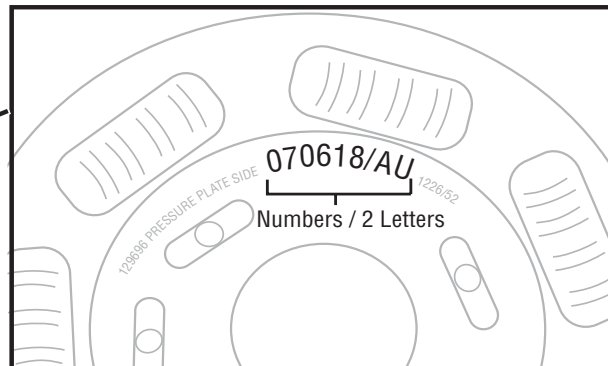
## Heavy Duty Clutch Serial Number (Date Code) Locations

Easy-Pedal Clutch- Two places to locate the Serial Number (Date Code):

1. Stamped into the clutch cover



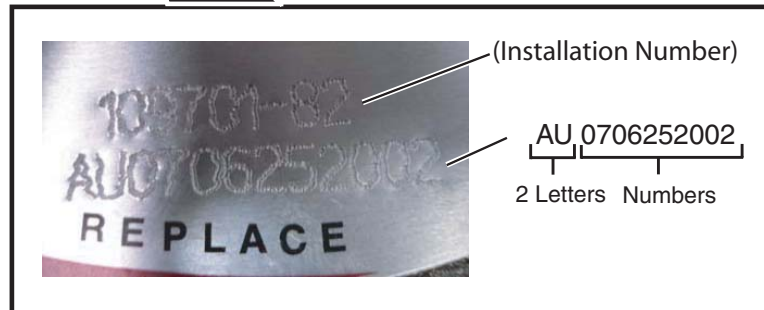
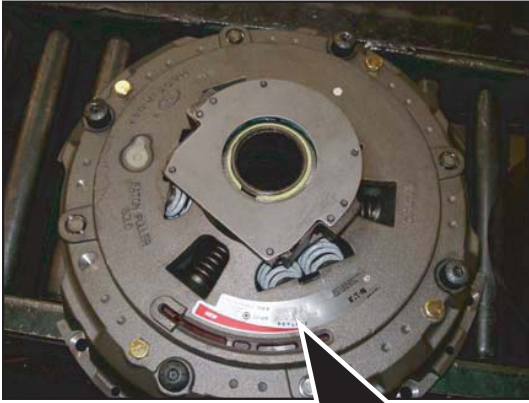
2. Stamped in ink on spring cover



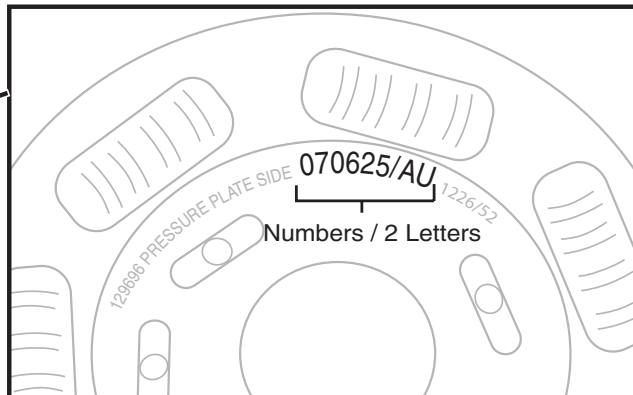
# Clutch Serial Number (Date Code) Locations

Solo Clutch - Two places to locate the Serial Number (Date Code) :

1. On silver plate on clutch cover



2. Stamped in ink on spring cover

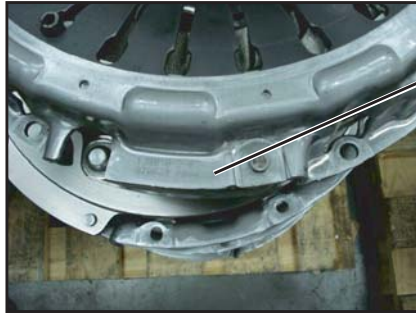


# Clutch Serial Number (Date Code) Locations

## Medium Duty Clutch Serial Number (Date Code) Locations

### 365mm Clutch - Serial Number (Date Code) Location:

- Stamped into clutch cover



13010-Z-BZ  
070629,0044  
Numbers

### Solo and Manual Adjust Clutches - Two places to locate the Serial Number (Date Code) :

1. Stamped into flat surface or rim area of clutch cover



AU 07062500  
2 Letters      Numbers

2. Stamped on spring cover



129696 PRESSURE PLATE SIDE 070622/AU 12266779  
Numbers / 2 Letters

HD DM



121000-1=Eaton Part Number

Serial# →(AU=Plant assembled in, 070625=Year,Month,Day, 0071=Assigned Number)



070618=Year, Month, Day AU=Plant, 0701-52=Eaton Part#

MD DM (UltraShift)



121000-1=Eaton Part Number

Serial# →(AU=Plant assembled in, 070625=Year,Month,Day, 0071=Assigned Number)



070622=Year, Month, Day AU=Plant, 1226-73=Eaton Part#